



# PS-240W-48V

Enclosed DC Power Supply

UNIT CODE	DESCRIPTION
PS-240W-48V	240 Watt, 48V DC, Single Output Enclosed Switching DC Power Supply

SPECIFICATIONS		
Input	Output	Agency approvals
Universal AC input 88-132/176-264VAC@47-63Hz	+48VDC@0-5A	UL/CUL/TUV/CE

## Features at a Glance:

- 100% full-load burn-in
- Auto-switch AC input
- No minimum load required
- Two-year warranty
- 3.3 watts/in<sup>3</sup>
- 105°C output capacitor
- Auto cooling fan
- 10° to +60°C working temperature
- Output voltage: +48VDC@0-5A
- Watts: 240
- Input voltage: 88-132/176-264VAC @47-63Hz
- Power density: 3.12W/in<sup>3</sup>
- Ripple & noise: 240mV p-p
- Load reg.: ±1.0%
- Line reg.: ±1.0%
- Inrush current (A) @ 120VAC: 18
- Isolation voltage: 3000
- Leakage current: 1.2mA @ 240V
- Rise time: 20ms
- Hold up time: 20ms
- Vibration: 10-500HZ; 2G
- Voltage adjustment: 10%
- Efficiency: 87%
- MTBF hours: 179,000
- Agency approval: UL/CUL/TUV/CE
- Weight: 2.5 lbs (1.1 Kgs)**
- Dimensions: 8.0"L X 3.7"W X 2.6"H**  
**190 X 93 x 65 mm**



With a built-in cooling fan that operates from an automatic thermal switch, the workhorse Mean Well S-240 produces 240 watts of power from 0°C to 50°C, and is derated to -10°C and 60°C. The input features an auto-sensing circuit that switches between 88-132VAC and 176-264VAC. The impressive reliability derives from a conservative design, the exclusive use of high-quality components, and 100% full-load burn-in. Protection includes short-circuit, overload and over-voltage. A novel soft-start circuit limits the AC surge current. Guaranteed safety standards comprise UL1950 and TUV EN60950, and these products carry the European CE mark. The DC output voltage can be adjusted ±10% of nominal rating.

Pricing:	1 +	\$ 199.50
	10 +	\$ 187.50
	100 +	\$ 175.70
<a href="http://electracool.com">electracool.com</a>		



PO Box 7091  
Nashua, NH 03060 USA

For Information Call

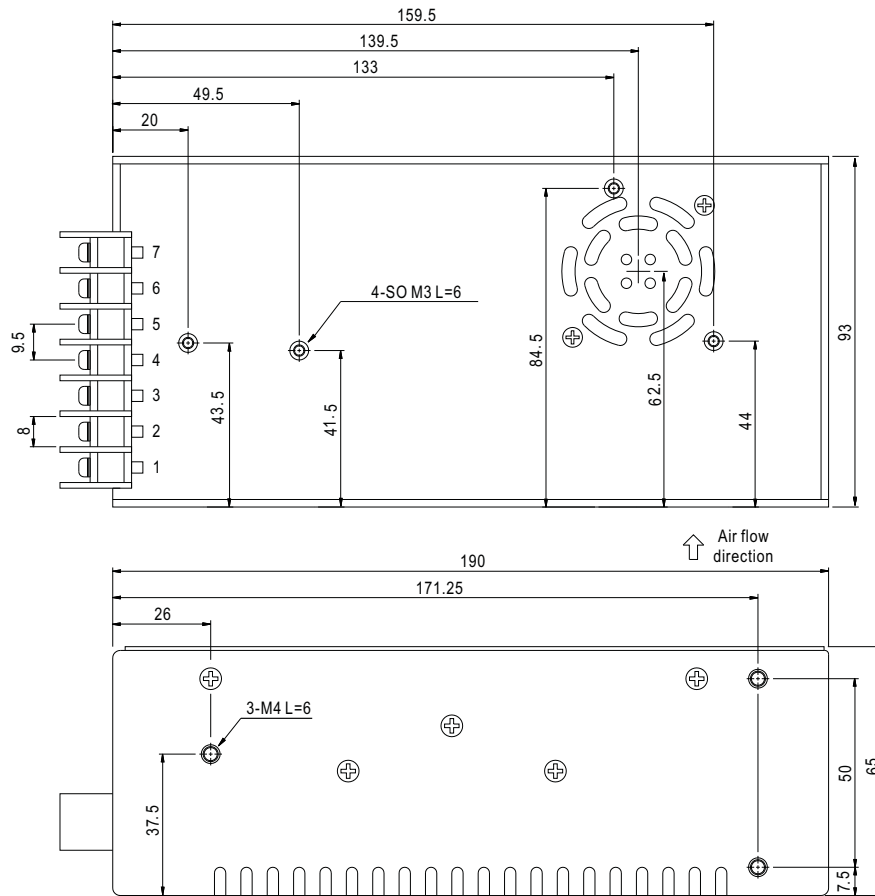
**1 866-665-5434**

international Inquiries (603) 888-2467  
email: [sales@electracool.com](mailto:sales@electracool.com)



■ Mechanical Specification

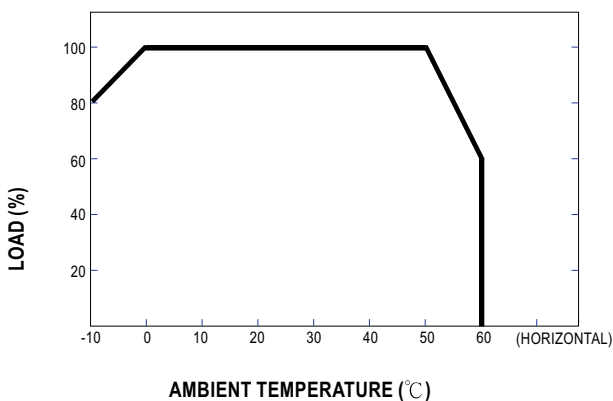
Case No. 911 Unit:mm



Terminal Pin. No Assignment

Pin No.	Assignment	Pin No.	Assignment
1	AC/L	4,5	DC OUTPUT -V
2	AC/N	6,7	DC OUTPUT +V
3	FG $\perp$		

■ Output Derating



■ Static Characteristics (24V)

